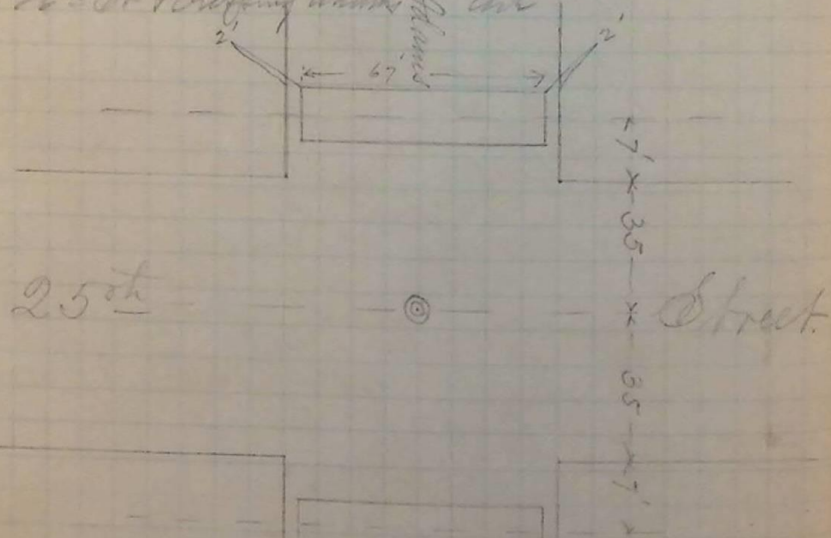


Set centers for Cross Section on
Adams Ave. 28th St to 31st St.

A.M. Aug 18th 1890

Set stakes every ten feet for Cross-
marks on N. and S. sides of 25th St
and crossing Adams Ave. also on N & S
sides 22nd St + crossing Adams Ave



25th

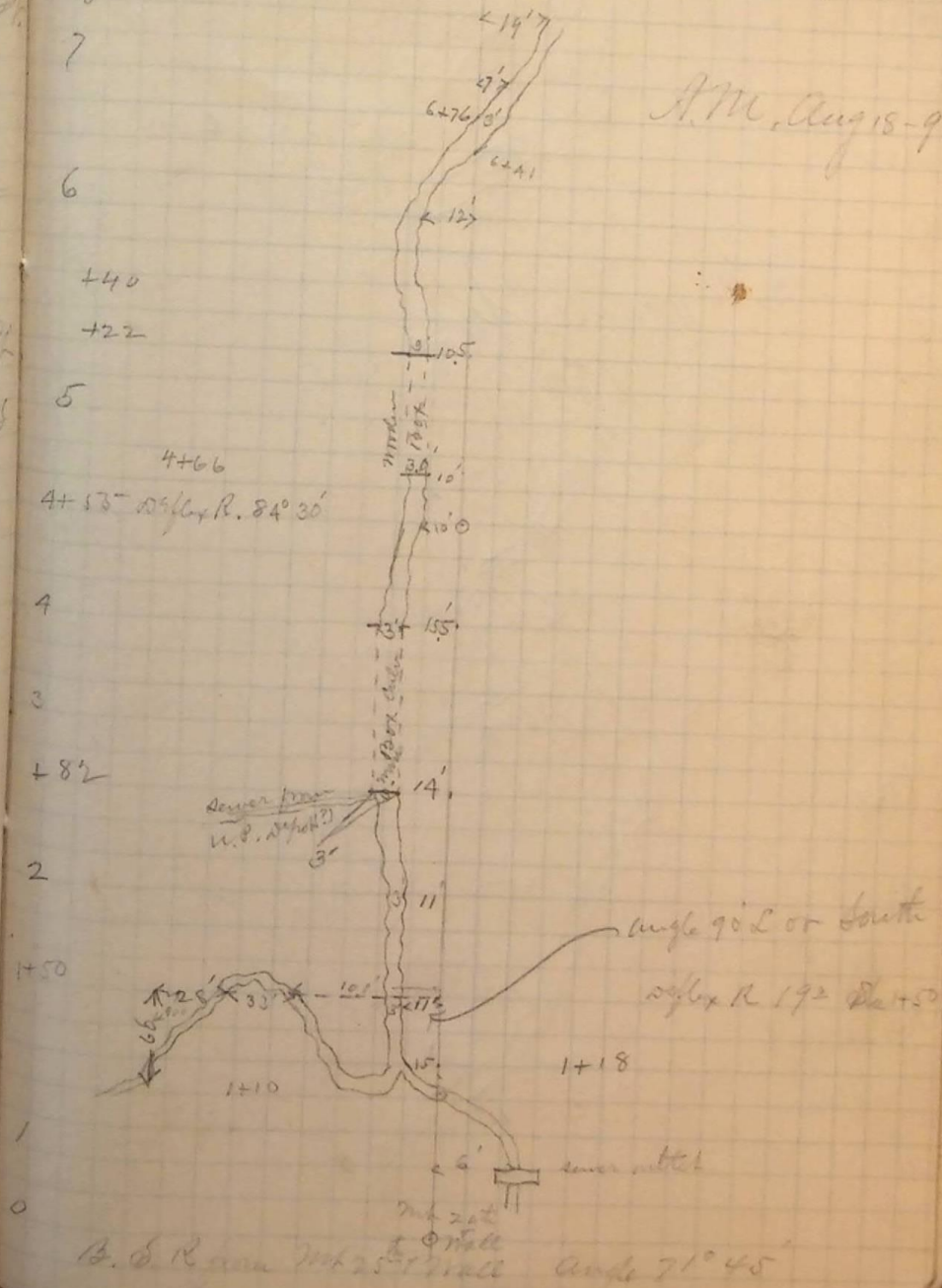
Street.

Adams Ave.

P.M. Aug 18-90

Meander of Sewer 24th Wall av. 34
to Mr Middleton's (old front)

A.M. Aug 18-90



B. & R. near 25th Wall Angle 71° 45'